






Student 1

Which is larger?

$\frac{2}{3}$ or $\frac{3}{2}$ because $\frac{2}{3} =$  and $\frac{3}{2} =$ 






$\frac{2}{3}$ or $\frac{3}{4}$ $\frac{3}{4}$ is bigger because theres less space left when you color every thing in  




$\frac{2}{5}$ or $\frac{3}{10}$  

$\frac{3}{7}$ or $\frac{2}{5}$   because $\frac{3}{7}$

Student 2

$\frac{3}{2}$ is larger Which is larger? because $\frac{2}{3}$ or $\frac{3}{2}$   

$\frac{2}{3}$ or $\frac{3}{4}$   $\frac{3}{4}$ is larger because $\frac{2}{5}$ or $\frac{3}{10}$   

$\frac{3}{7}$ or $\frac{2}{5}$   

$\frac{3}{7}$ or $\frac{2}{5}$ 

Which is larger?

$$\frac{2}{3} \text{ or } \frac{3}{2}?$$

$$\frac{3}{2}$$

$$\frac{2}{3} \text{ or } \frac{3}{4}?$$

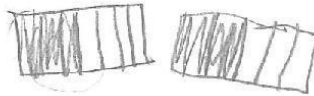


$$\frac{2}{5} \text{ or } \frac{3}{10}?$$

$$\frac{2}{5}$$

the same

$$\frac{3}{7} \text{ or } \frac{2}{5}?$$



Student 3

Student 4

$$\frac{2}{3} \text{ or } \frac{3}{2}?$$



Which is larger?

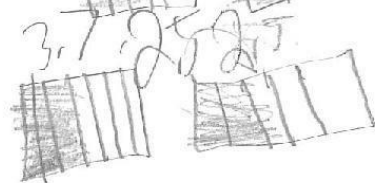
$$\frac{2}{3} \text{ or } \frac{3}{4}?$$



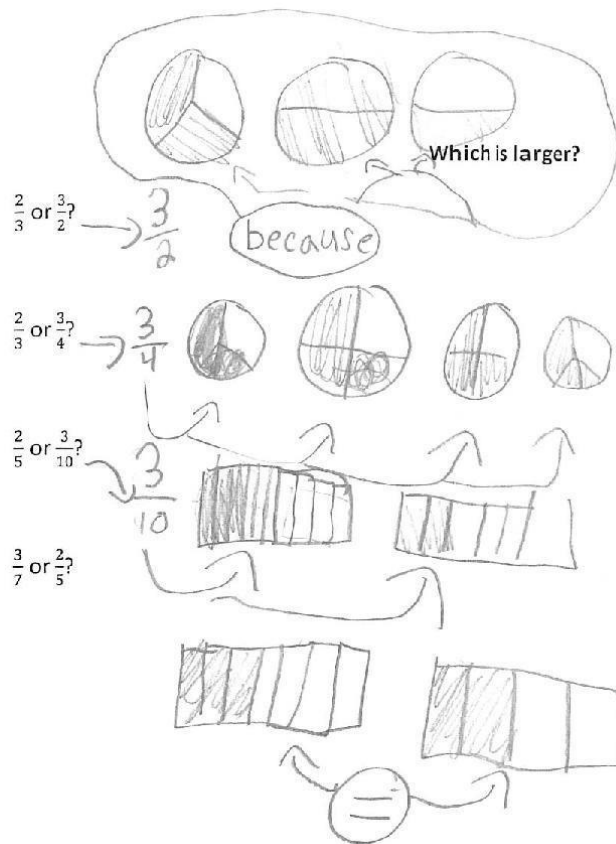
$$\frac{2}{5} \text{ or } \frac{3}{10}?$$



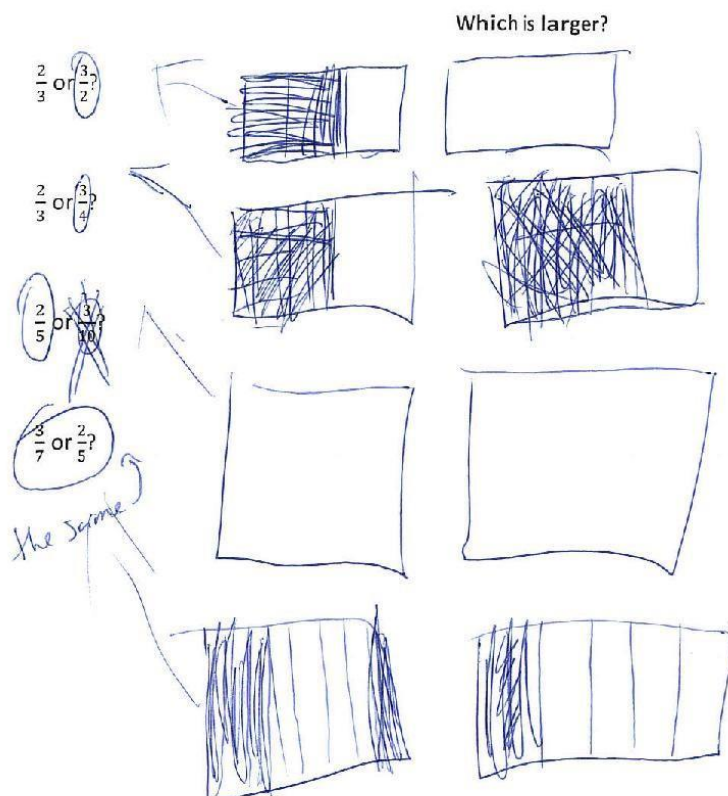
$$\frac{3}{7} \text{ or } \frac{2}{5}?$$



Student 5

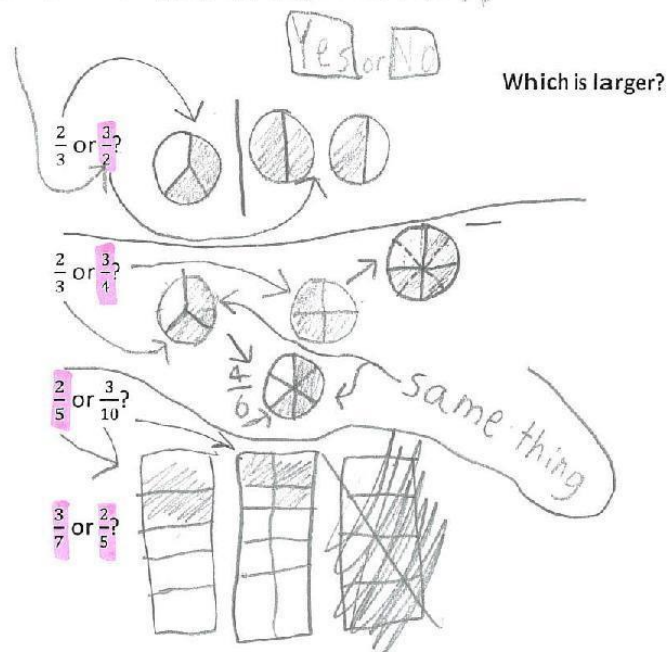


Student 6

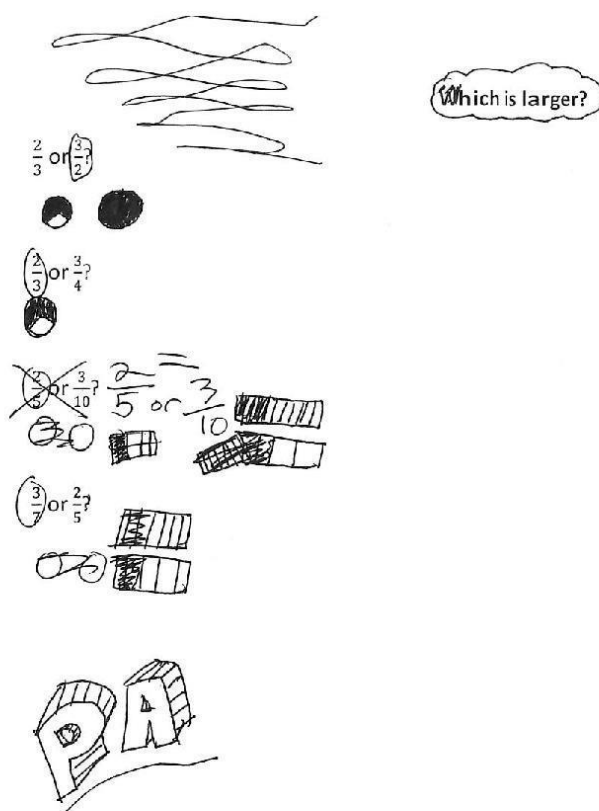


Student 7

2 Thirds are not even 1 whole.
But 3 halves are 1 and a half.



Student 8



Student 9

Which is larger?

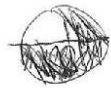
$$\frac{2}{3} \text{ or } \frac{3}{2}?$$



$\frac{2}{3}$ fractions work back words

$$\frac{2}{3} \text{ or } \frac{3}{4}?$$

$$\frac{3}{4}$$



more space there

$$\frac{2}{5} \text{ or } \frac{3}{10}?$$

$$\frac{2}{5}$$

~~cause~~ $\frac{2}{5}$ of 2

$$\frac{2}{10}$$

$\frac{2}{5}$ of ten is 2

$$\frac{3}{7} \text{ or } \frac{2}{5}?$$

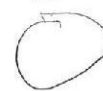
$$\frac{2}{5}$$



$$\frac{3}{7}$$



$\frac{2}{5}$ of 7



$\frac{2}{5}$ of ten



$\frac{3}{10}$ of ten

Which is larger?

$$\frac{2}{3} \text{ or } \frac{3}{2}?$$

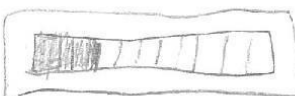


$$\frac{2}{3} \text{ or } \frac{3}{4}?$$



Student 10

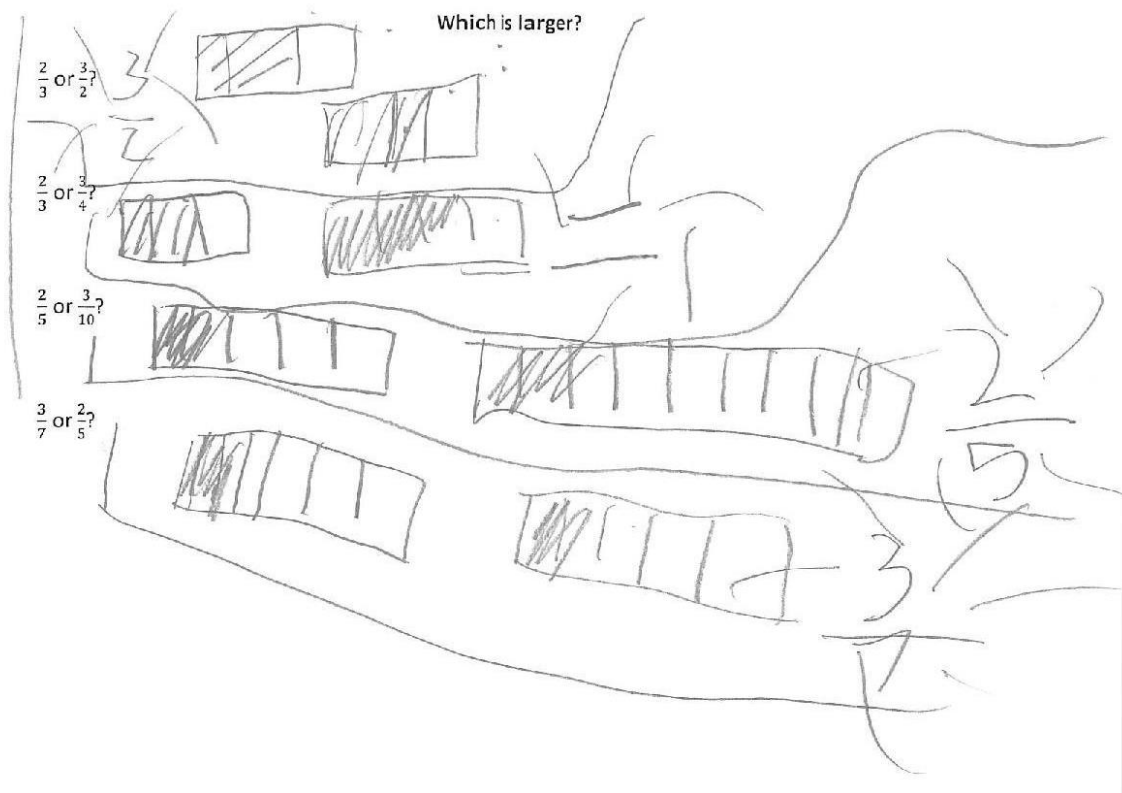
$$\frac{2}{5} \text{ or } \frac{3}{10}?$$



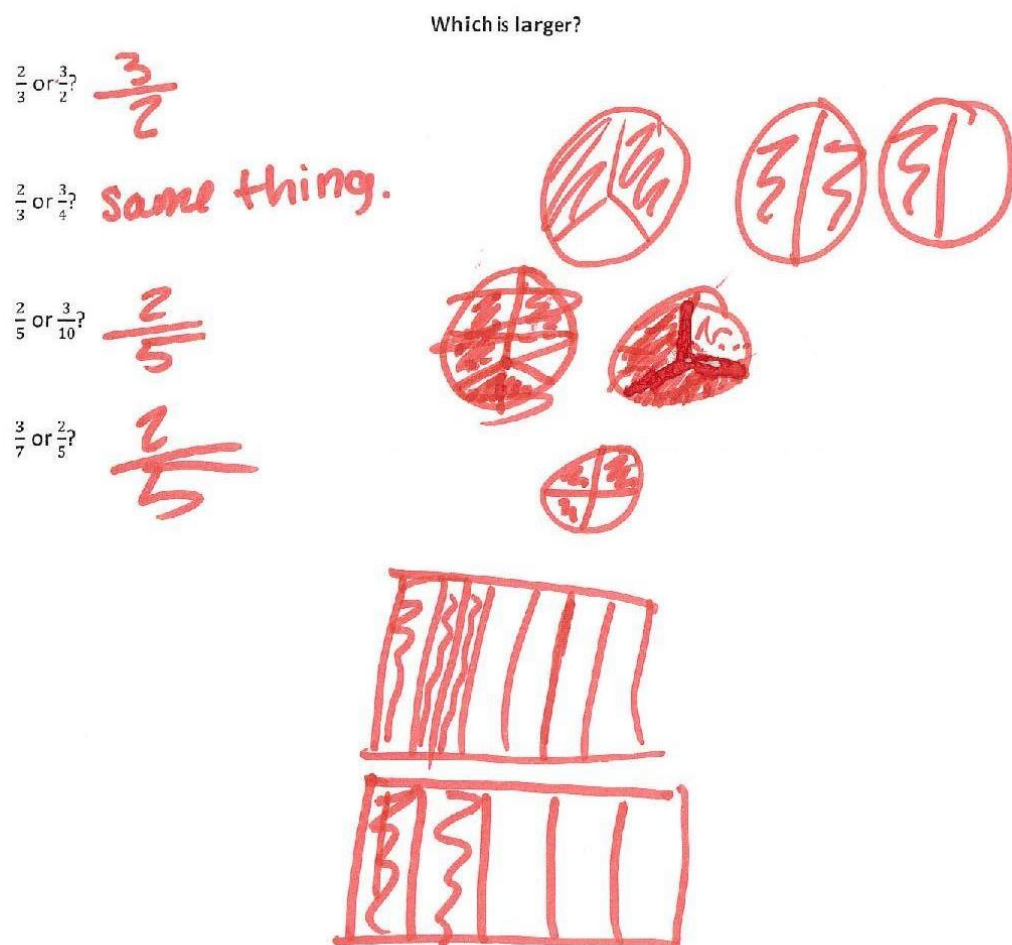
$$\frac{3}{7} \text{ or } \frac{2}{5}?$$



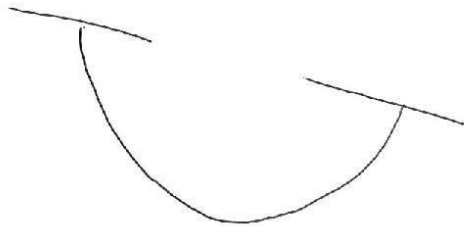
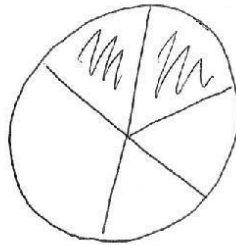
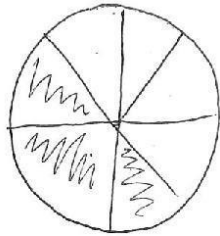
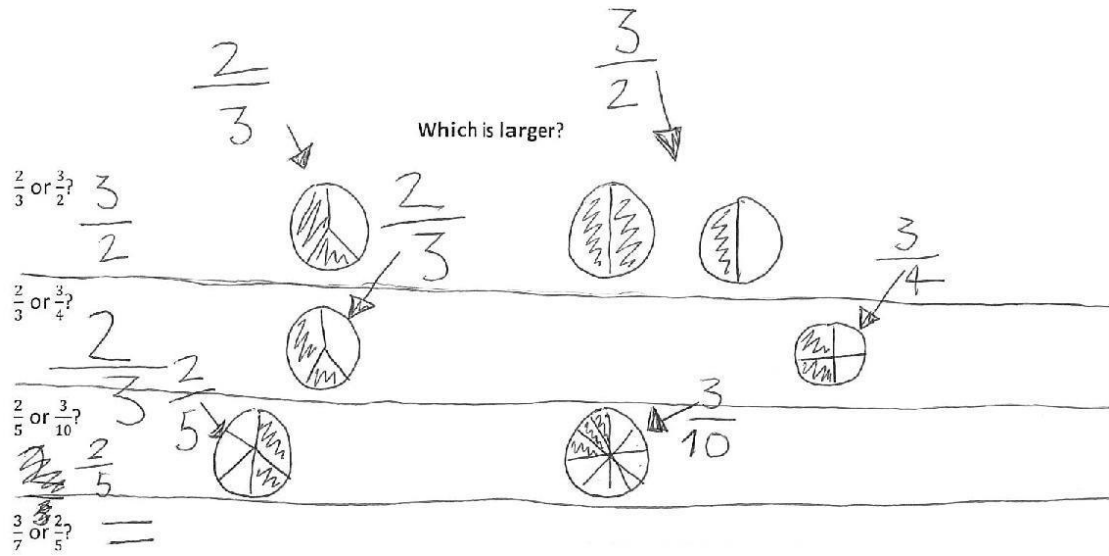
Student 11



Student 12



Student 13



Yay!

Student 14

