



# *Engaging Your Math Students via Technology*



Presented by:

Dr. Diana S. Perdue

Rimwe Educational Resources LLC

[www.rimwe.com](http://www.rimwe.com)



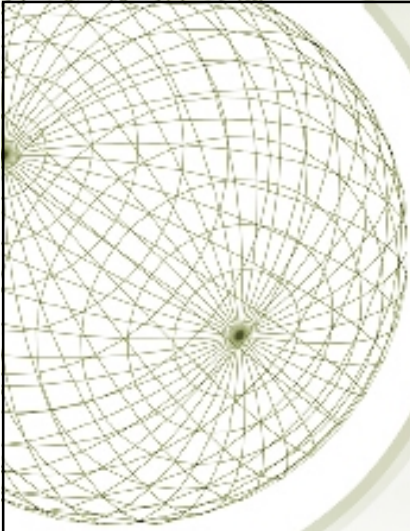
ScreenCast  
-o-Matic



# *Today's Agenda*

- ◆ Discuss ways to engage our students
- ◆ Discuss ways technology can help
- ◆ Discover 4 specific tools you can use
  - ◆ Twitter
  - ◆ VoiceThread
  - ◆ Poll Everywhere
  - ◆ Screencast-o-matic

*What does student engagement look like?*





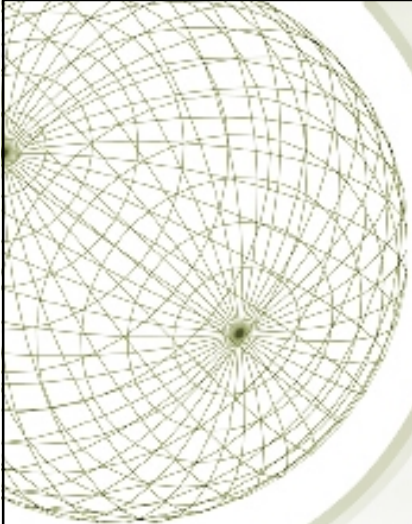


## *Engaged students are:*

- ✦ Thinking
- ✦ On task
- ✦ Talking / Discussing
- ✦ Laughing
- ✦ Doing
- ✦ Justifying / Explaining
- ✦ Revising
- ✦ Interested







# *Ways to Engage Students (according to teachers)*



- ★ Give students **ownership**
- ★ Give students **choice**
- ★ Make the method & content **relevant**
- ★ Build **relationships** with and between students
- ★ Show **enthusiasm!**  
(Make it **FUN!**)



# *What students say engage them*

- ✦ Working with peers
- ✦ Seeing connections to the real world
- ✦ Having choices
- ✦ Movement (activity)
- ✦ Visuals
- ✦ Variety
- ✦ Passion from the teacher
- ✦ Using technology





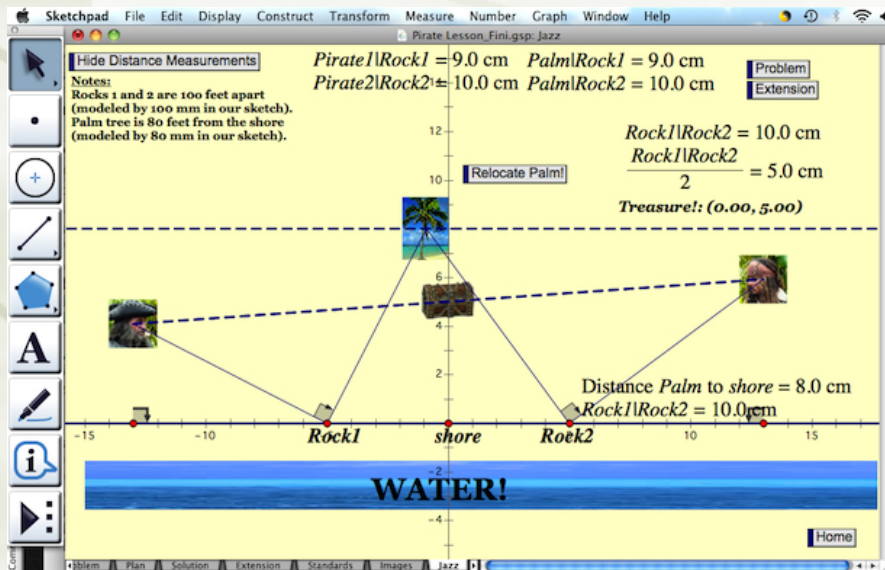
# *Problems*

- ✦ Students are not prepared for class
- ✦ Students are not familiar with how to use the technology
- ✦ Students are not interested
- ✦ Students are not participating in class



# Types of Technology

- ★ Social Media
- ★ Audio / Visual
- ★ Discussion / Chat
- ★ Demonstration
- ★ Presentation
- ★ Networking
- ★ Communication



# *Ways Technology can Help*

- ◆ Worldwide connections
- ◆ Current events
- ◆ Collaboration
- ◆ Collecting data
- ◆ Asking questions
- ◆ Demonstrations





# Using Twitter



## What is it?

- ★ Twitter is a social media platform that allows everyone in the world to tell us what they're doing right now, in 140 characters or less.
- ★ Supports links and images
- ★ Allows searches

## How can I use it?

- ★ Communication & collaboration with a #yourclass tag
- ★ Current events connections to topics
- ★ Tweet assignments like
  - ★ A “math history moment”
  - ★ A geometry theorem
  - ★ Math joke



#math

Saved search: #math

Tweets [Top](#) / [All](#) / [People you follow](#)



**Key Curriculum** @keycurriculum

1h

A pi-worthy celebration: U.S. population breaks 314, 159, 265  
[businessinsider.com/math-nerds-eve...](http://businessinsider.com/math-nerds-eve...) #mathchat #math

Expand



**ETA hand2mind** @ETAhand2mind

1h

Hot topics, resources, downloads and more [ow.ly/d0BfC](http://ow.ly/d0BfC) #science  
#math #literacy #homeschool #school #teach

Expand



**TouchMath** @TouchMath

1h

If you measured the circumference of an elephant's foot and doubled it, you would have the elephant's height. #math  
#funmathfacts #touchmath

Expand



**TouchMath** @TouchMath

2h

What category are you in? #math #funmath #touchmath  
[pic.twitter.com/92IZJXqd](http://pic.twitter.com/92IZJXqd)

[View photo](#)



**Skype Classroom** @SkypeClassroom

9h

How can maths topics like Algebra be applied to general life? Help Mr.Preston out if you're a #math expert:  
[education.skype.com/projects/2921-...](http://education.skype.com/projects/2921-...) #mathchat

Expand



**Rimwe** @RimweLLC

9h

Interesting story about how a #school is using #evernote:  
[awe.sm/g33Sb](http://awe.sm/g33Sb). We use it in #college 2. #edtech #stem #math #k12  
#resources

Expand

# *Using VoiceThread*



## **What is it?**

- ◆ VoiceThread is a collaborative communication tool that allows people to respond in different ways including audio, video, and text.

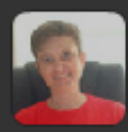
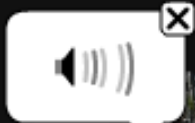
## **How can I use it?**

- ◆ Interactive group assignments
- ◆ Worldwide connections & collaboration with others
- ◆ New medium for class projects



menu

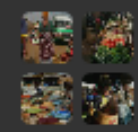
# Libby's Trip to Malawi (1/19)



comment



more





# *Using Poll Everywhere*



## **What is it?**

- ★ Poll Everywhere is an online data collection tool that allows people to respond to questions using their cell phone or computer.

## **How can I use it?**

- ★ No-cost version of “clickers”
- ★ Increase student participation during lecture
- ★ Allow ongoing assessment
- ★ Data collection

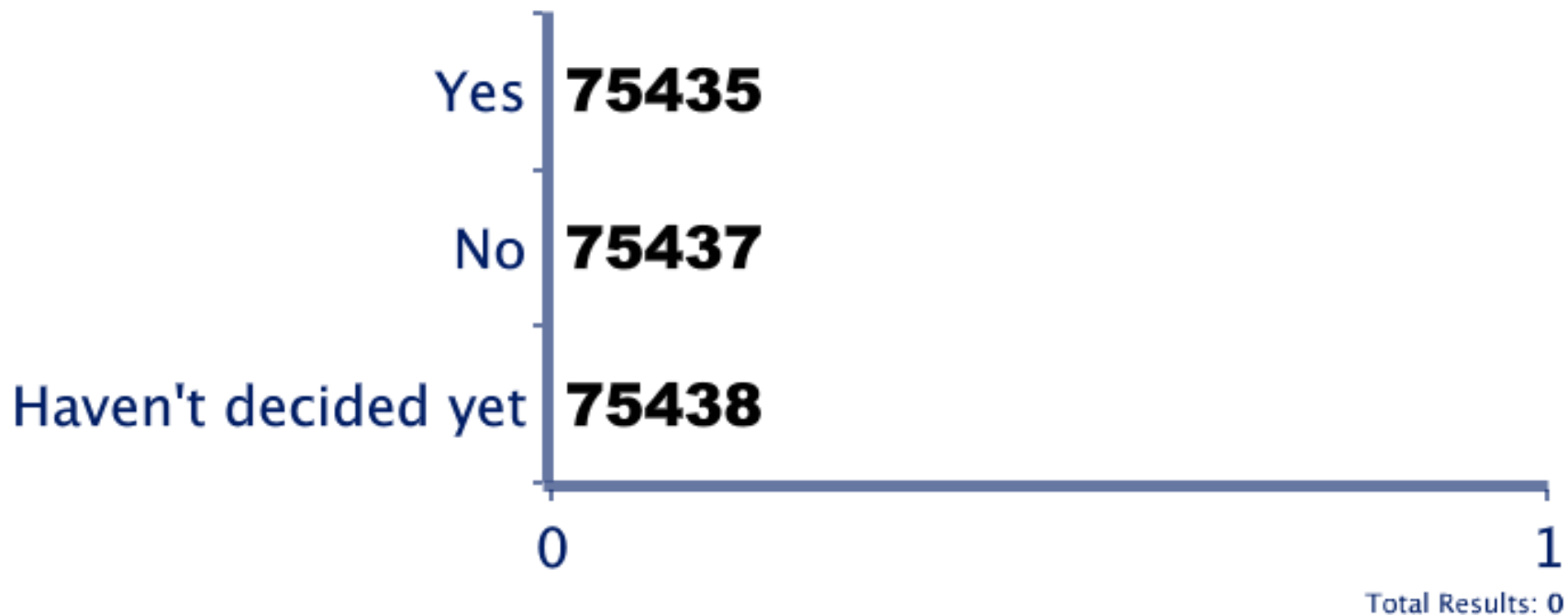
# From what you've seen so far, do you think technology can help you engage your students?



Text a **CODE** to **37607**



Submit a **CODE** to <http://PollEv.com>



powered by **Poll Everywhere**

Live Audience Polling

# *Using Screencast-o-matic*

The logo for Screencast-o-matic, featuring the text "Screencast -o-Matic" in a bold, sans-serif font. The "o" in "-o-" is a small circle. The logo is contained within a black-bordered square with a white background.

**Screencast  
-o-Matic**

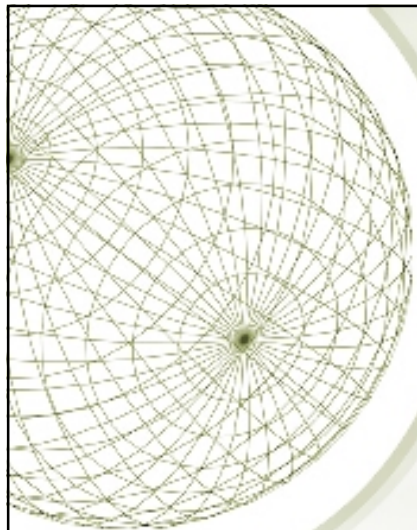
## **What is it?**

- ★ Screencast-o-matic is an online tool that allows you to record audio and video right from your computer screen (aka “screencast”).

## **How can I use it?**

- ★ Create how-to screencasts on using tools, technology, LMS to save class time
- ★ Extend teaching & learning time
- ★ Demonstrate anything!





## Exponential Growth with the Graphing Calculator

TI-SmartView TI-84 File Edit View Tools Scripts Help  
TI-SmartView™ for the TI-84 Plus

TI-84 Plus Silver Edition  
TEXAS INSTRUMENTS

Graph

L1	L2	L3	1
█	█	█	█

List

Stat Plots

- 1: Plot1...Off
- 2: Plot2...Off
- 3: Plot3...Off
- 4: PlotsOff

Stat Plot

Clear Key Press History

## Exponential Growth with the Graphing Calculator

0:29 / 14:40

[Tweet](#) 0 [Like](#)

Requires **JAVA 1.5** or later. [Test your Java](#)

### Description

This is part 1 of a 2-part series on using the graphing calculator to enter data into

### Notes

[Add A Note](#)

No notes for this screencast... Maybe you should add some by clicking on the "Add A Note" link below.



## *Final Tips*

- ◆ Don't try to do it all: start small
- ◆ Choose technology wisely: match the problem
- ◆ Ensure infrastructure / compatibility before implementing: test runs
- ◆ Be flexible: adapt & laugh
- ◆ Be open: let students take the lead



## *Useful Links*

- ★ Public Folder on DropBox:  
<http://tinyurl.com/NCTM13-Perdue>
- ★ Rimwe Educational Resources LLC:  
<http://www.rimwe.com>
- ★ Link to Approach Training workshop video:  
[tinyurl.com/Rimwe-ApproachTraining](http://tinyurl.com/Rimwe-ApproachTraining)





## *Contact Info*

**Dr. Diana S. Perdue,  
Rimwe Educational Resources LLC**

- ★ Website: <http://www.rimwe.com>
- ★ Email: [Dr.Perdue@rimwe.com](mailto:Dr.Perdue@rimwe.com)
- ★ Skype: dianaperdue
- ★ Twitter: @RimweLLC

A decorative wireframe sphere is positioned in the upper left corner of the slide. It consists of a grid of lines forming a sphere, with a central point from which the lines radiate outwards.

## *Bonus Tech*

- ◆ QR codes: barcode for learning ([qrcode.kaywa.com](http://qrcode.kaywa.com))
- ◆ Remind101: text messaging ([www.remind101.com](http://www.remind101.com))
- ◆ Desmos: online graphing calculator ([www.desmos.com](http://www.desmos.com))
- ◆ Livebinder: virtual portfolio ([www.livebinders.com](http://www.livebinders.com))

