

Changing the Culture of Numeracy:



Amy Vickers

amyjvickers@gmail.com

www.elevatingadulthoodeducation.com

Rebecca Strom

rstrom1@isd77.k12.mn.us

Mankato Area, Adult Basic Education

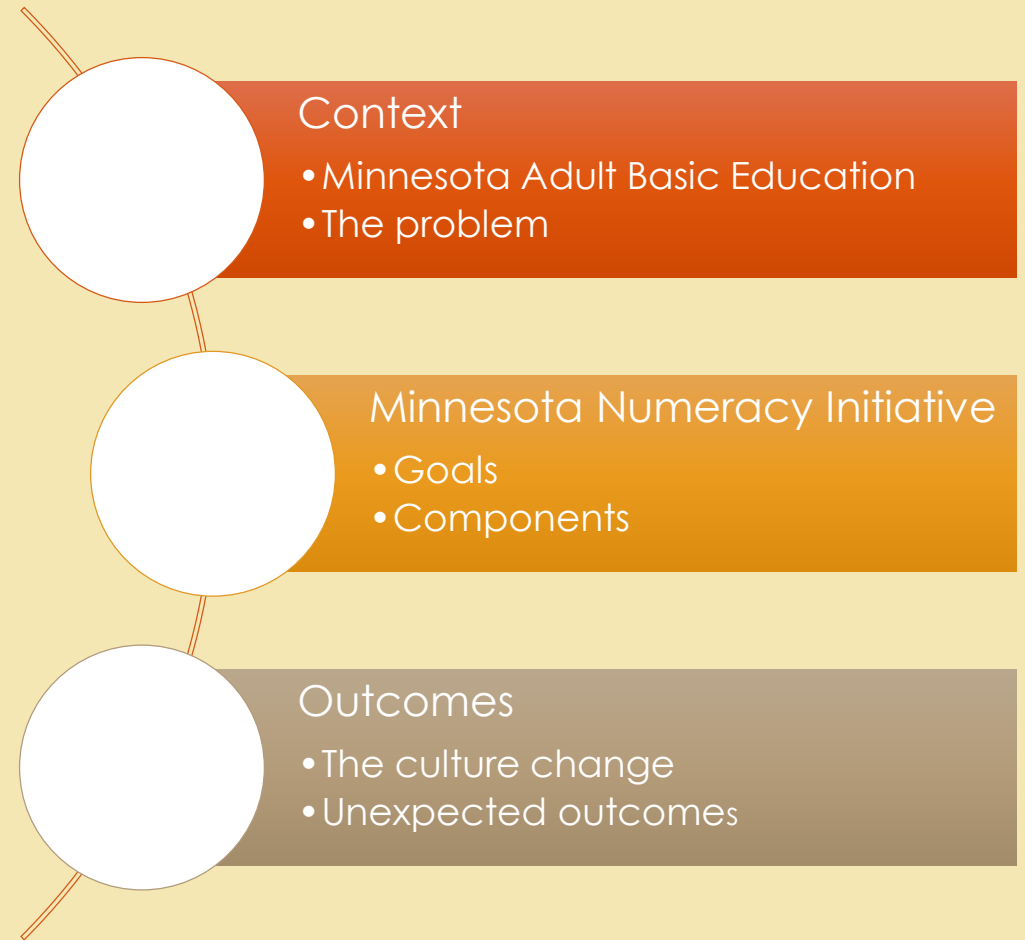
Overview

Objective

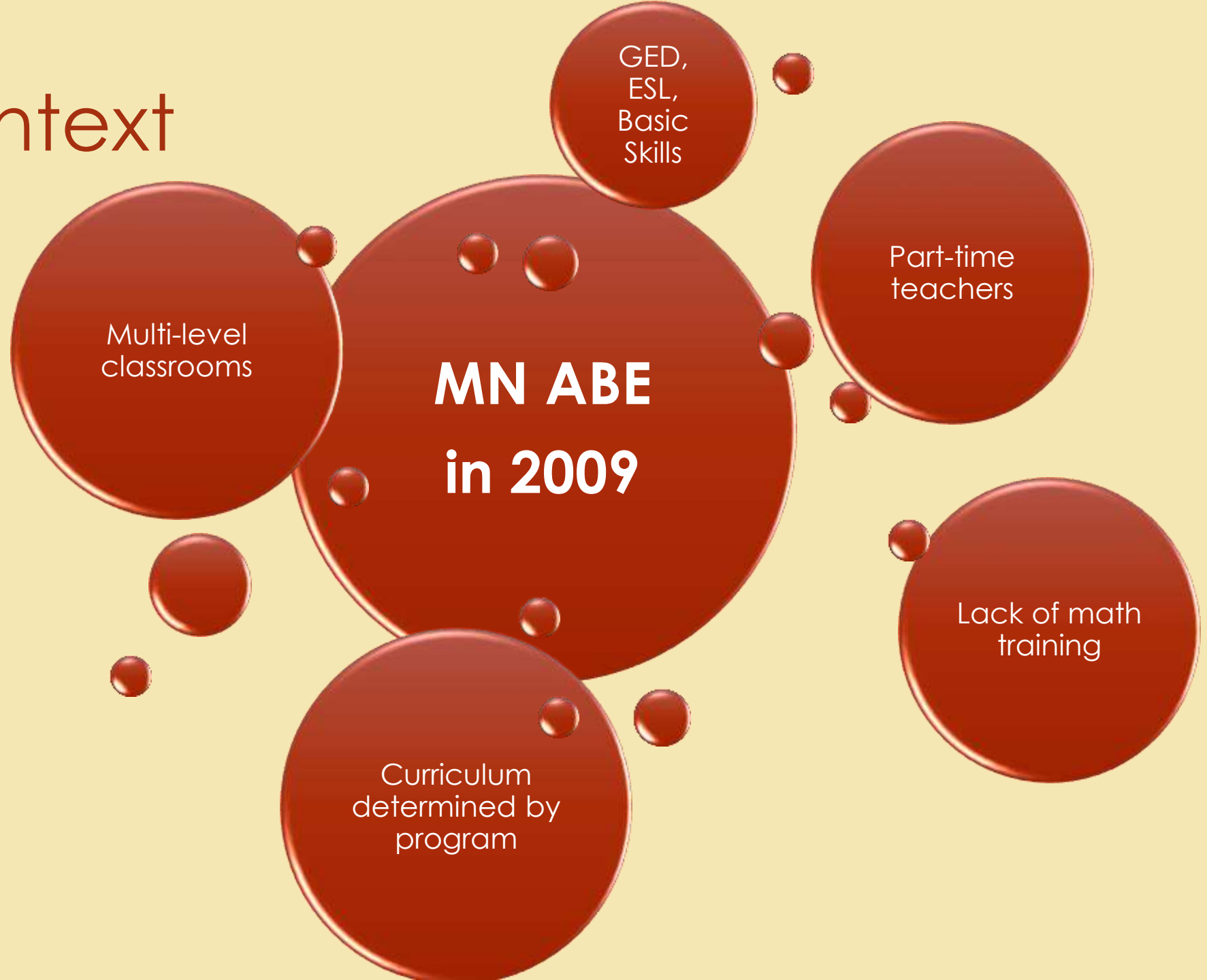
Gain an understanding of the structure, components, and impact of the **Minnesota Numeracy Initiative**.

Purpose

Which of the components could be used or adapted for your setting?



Context





Minnesota Numeracy Initiative



Problems

High need for math professional development

Many ABE teachers lack formal math training

Math is often a barrier to GED attainment and transitions to post-secondary

Lack of math-focused professional development in the state

Program Goals

Increased awareness of **effective instructional strategies**

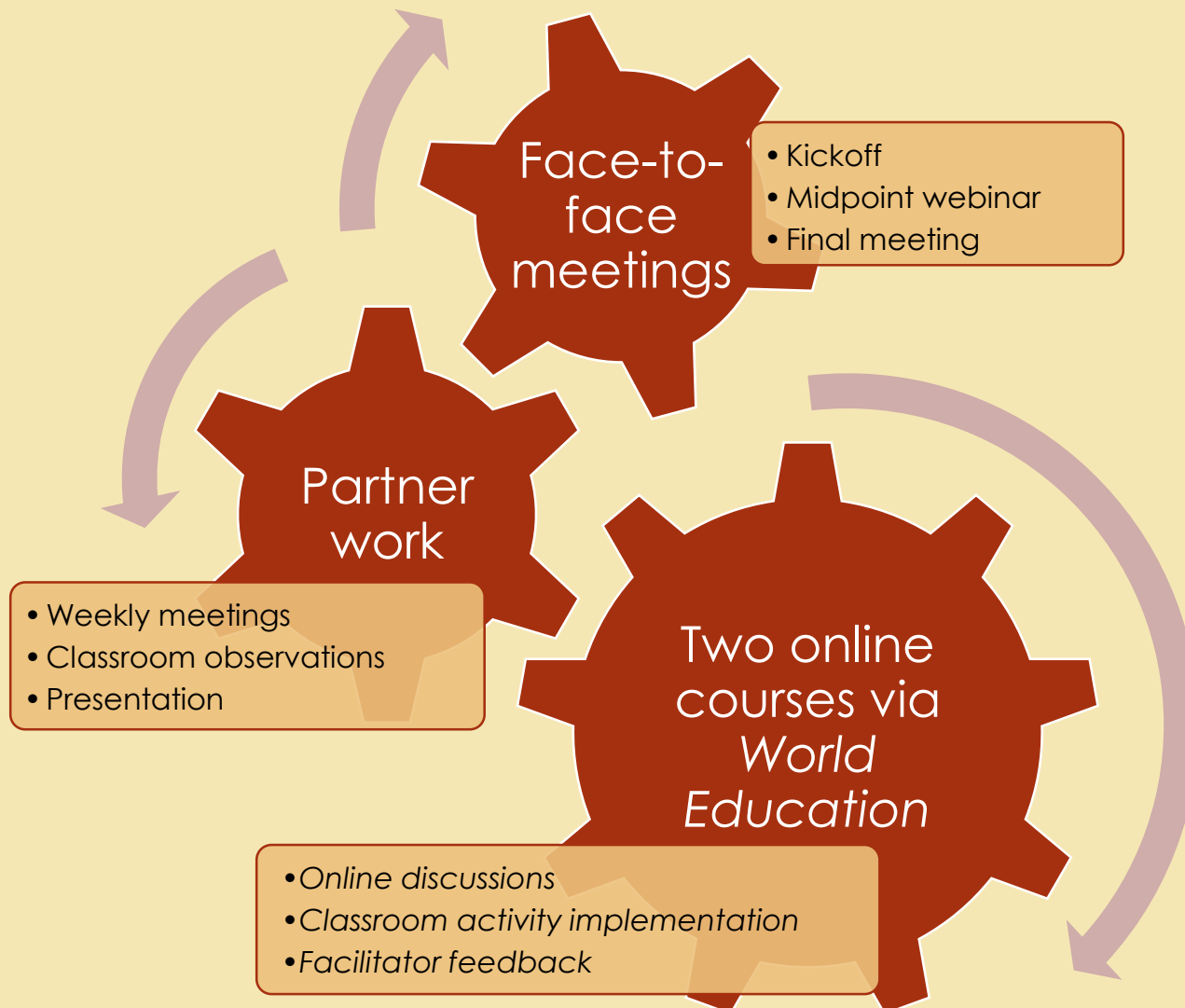
- Strengthened **math content knowledge** and **self-confidence** for teachers
- Enhanced **collegiality and professionalism** through collaboration

Improved **outcomes for learners** through more effective numeracy instruction

Development of **local leaders and presenters**

MNI Components

(cohort of about 24 teachers per year)



Continued Ongoing Professional Development Support

- Community of Practice
- Online professional development courses for MNI alumni
- Ongoing Wiggio forum to share ideas and questions regarding professional development, numeracy instruction, teaching strategies, CCRS, etc...

Changing the Culture of Numeracy

- We have a common language around effective numeracy instruction
- A leadership group and network emerged
- Teachers developed a better understanding of the content they are teaching
- Teachers who are excited about teaching math have a place to connect

Unexpected Outcomes

- ESL and math conversation
- Low-level English-Language Learners
- Prepped us for new GED in 2014
- MNI alumni are better prepared for teaching the national College and Career Readiness Standards for Adult Education

Outcomes

MNI Thanks

- Kim Johnson and Astrid Liden for its creation
- ATLAS program of Hamline University staff
 - Patsy Vinogradov
 - Marisa Geisler
 - Gail Rutan
- The MNI Advisory Team (A-team)
- Participants and their program managers
- Students for trying new ways of learning

Thank you!

**HANDOUT: WHICH COMPONENTS OF MNI
COULD YOU ADAPT FOR YOUR SETTING?**

Amy Vickers

amyjvickers@gmail.com

www.elevatingadulthoodeducation.com

Rebecca Strom

rstrom1@isd77.k12.mn.us

Mankato Area, Adult Basic Education



atlas ABE Teaching & Learning
Advancement System

 **HAMLINE UNIVERSITY**